

# COMPACT CNC ROTARY TABLE

**NIKKEN**



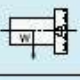
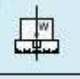
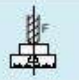

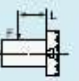

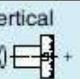

CNC105 and accessories

- Wide application can be offered from small drilling press to M/C
- Suitable for indexing/leads cutting of small size work pieces
- Various kinds of the work chucking attachments can be offered from 5C collet fixtures to the air/hyd. chuck

MOTOR MOUNTED		FACE PLATE		M-SIGNAL METHOD			
<b>R</b> RIGHT HAND	<b>L</b> LEFT HAND	<b>WITH</b> FACE PLATE	<b>W/O</b> FACE PLATE	<b>α21</b> CTRL P.59	<b>EZ</b> CTRL P.69	<b>ADD. AXIS</b> P.57	<b>ACCURACY SPEC.</b> P.99
<b>ROTARY JOINT</b> P.89	<b>ULTRA PRECISION</b> P.87	<b>SUPPORT TABLE</b> P.79	<b>TAIL STOCK</b> P.81	<b>SCROLL CHUCK</b> P.83	<b>POWER CHUCK</b> P.84	<b>CLAMP DEVICE</b> P.85	<b>T-NUT</b> P.86

## Specifications

( ) : High Speed CNC ROTARY Table Z series

Item / Code No.		CNC105 CNCZ105	CNC180 CNCZ180	CNC202 CNCZ202
Diameter of Table	φmm	105	180	200
Diameter of Spindle Hole	φmm	φ60H7 φ30	φ60H7 φ40	φ60H7 φ40
Center Height	mm	105	135	135
Width of T Slot	mm	φ10H7 Pin hole	12 <sup>+0.018</sup> <sub>0</sub>	12 <sup>+0.018</sup> <sub>0</sub>
Clamping System		Pneumatic*4	Pneumatic*4	Pneumatic*4
Clamping Torque	N·m	205	303	303
Table Inertia at Motor Shaft ( $\frac{90^\circ}{4}$ )	kg·m <sup>2</sup> ×10 <sup>-3</sup>	0.06	0.08	0.09
Servo Motor	min <sup>-1</sup>	α IF1·3000	α IF2·3000	α IF4·3000
MIN. Increment		0.001°	0.001°	0.001°
Rotation Speed	min <sup>-1</sup>	33.3(66.6)	33.3(66.6)	33.3(66.6)
Total Reduction Ratio		1/90(1/45)	1/90(1/45)	1/90(1/45)
Indexing Accuracy	sec	±30	±20	±20
Net Weight	kg	32	45	55
MAX. Work Load on the Table	Vertical  kg	30	100	100
	Horizontal  kg	60	200	200
MAX. Thrust Load applicable on the Table	 N	8800	18000	18000
	*1  F×L N·m	275	542	542
	 F×L N·m	220	690	690
Guide Line of MAX. Unbalancing Load	*2  N·m	-	30	50
MAX. Work Inertia	Vertical  ( $\frac{90^\circ}{4}$ ) kg·m <sup>2</sup>	0.04(0.02)	0.4(0.2)	1.0(0.5)
Driving Torque	*3  N·m	36(27)	72(54)	144(115)

\*1 This is the strength of the worm wheel without brake. It is applied against dynamic cutting thrust.

\*2 The guide line of MAX unbalancing load means the unbalancing load, when the rotary table is used with support table in vertical application. The guide line figure will be different according to the servo motor, please refer to P.57 for more detail.

\*3 Driving torque means the torque at MAX. rotation speed after acceleration. Driving torque is almost constant and independent from the load except unbalancing load is applied.

\*4 Air Intensifying Booster system is available if the supplied air pressure is under 0.5MPa or the brake torque is required to increase. P.95

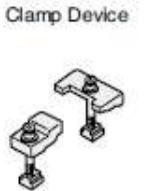
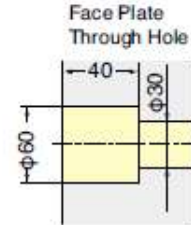
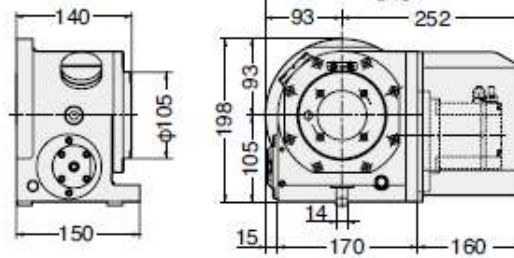
★ αIF4/5000 motor can be mounted on CNC180.

# CNC105, 180, 202



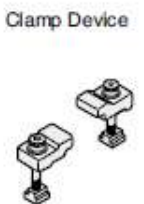
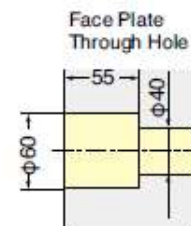
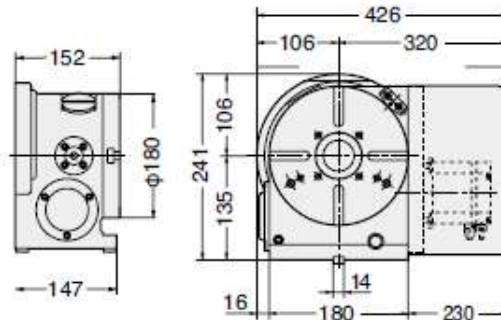
External dimensions depend on the type of the servo motor. Indicated dimensions are in case of FANUC. Please contact us for CAD files (2D:DXF, 3D:PARASOLID).

## CNC105, CNCZ105



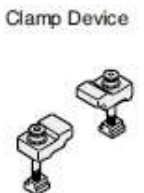
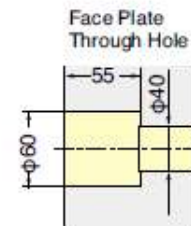
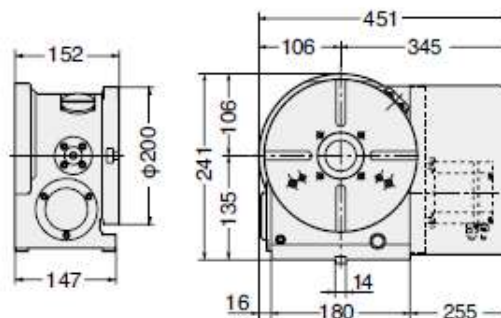
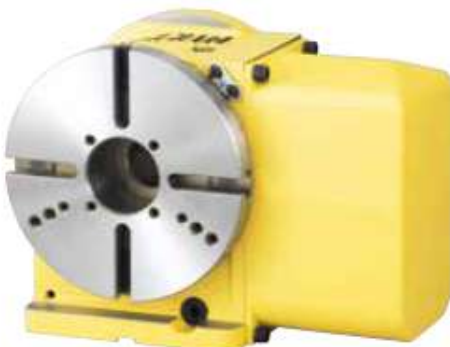
Air purge function is provided inside the motor cover as standard.

## CNC180, CNCZ180



Air purge function is provided inside the motor cover as standard.

## CNC202, CNCZ202



Air purge function is provided inside the motor cover as standard.